



2025 Annual Stormwater Management Report

Manager of Public Works, David Armstrong
Utilities Compliance Coordinator, Christine Brennan

January 28, 2026

EXECUTIVE SUMMARY

The Corporation of the Town of Gananoque's Public Works Department is pleased to provide the 2025 Stormwater Management Annual Report. The 2025 Annual Report has been prepared in accordance with the terms and requirements set out in the Consolidated Linear Infrastructure Environmental Compliance Approval (CLI-ECA) 156-S701.

The employees of the Town of Gananoque are committed to and share in the responsibilities for implementing, maintaining, and contributing to the continual improvement of the stormwater system.



David Armstrong
Manager of Public Works



Christine Brennan
Utilities Compliance Coordinator

TABLE OF CONTENTS

	Page #
Executive Summary	1
Table of Contents	2
List of Definitions	3
1. Introduction	5
2. System Description	5
3. System Performance and Monitoring	5
3.1 Stormwater Collection System	5
Table 1: Stormwater Collection System by Diameter	5
3.2 Stormwater Management Facilities	6
Table 2: Summary of Stormwater Management Facilities	6
3.3 Monitoring Data Summary	7
4. Environmental Trends – Previous 5 Years	7
5. Maintenance on Major Structures	7
5.1 Charles Street North Stormwater Infrastructure	7
5.2 River Street Stormwater Pond	7
6. Spills and Abnormal Discharge Events	7
7. Customer Complaints	8
8. Key Contacts	8

APPENDICES

Appendix A: Town of Gananoque Stormwater Map

LIST OF DEFINITIONS

Alteration(s)	<p>includes the following, in respect of the Authorized System, but does not include repairs to the system:</p> <ul style="list-style-type: none">a) An extension of the system,b) A replacement or retirement of part of the system, orc) A modification of, addition to, or enlargement of the system.
Approval	<p>means the Environmental Compliance Approval including any Schedules attached to it.</p>
Design Criteria"	<p>means the design criteria set out in the Ministry's publication "Design Criteria for Sanitary Sewers, Storm Sewers and Force mains for Alterations Authorized under Environmental Compliance Approval".</p>
Director	<p>means a person appointed by the Minister pursuant to section 5 of the EPA for the purposes of Part II.1 of EPA (Environmental Compliance Approvals).</p>
Ministry	<p>means the Ministry of the Minister and includes all employees or other persons acting on its behalf.</p>
Monitoring Plan	<p>means the monitoring plan prepared and maintained by the Owner under condition 4.1 in Schedule E of the Approval.</p>
Municipal Stormwater Management System	<p>means all Sewage Works, located in the geographical area of a municipality, that collect, transmit, or treat Stormwater and are owned, or may be owned pursuant to an agreement entered into under the Planning Act or Development Charges Act, 1997, by:</p> <ul style="list-style-type: none">a) A municipality, a municipal service board established under the Municipal Act, 2001 or a city board established under the City of Toronto Act, 2006; orb) A corporation established under sections 9, 10, and 11 of the Municipal Act, 2001 in accordance with section 203 of that Act or under sections 7 and 8 of the City of Toronto Act, 2006 in accordance with sections 148 and 154 of that Act.
Operating Authority	<p>means, in respect of the Authorized System, the person, entity, or assignee that is given responsibility by the Owner for the operation, management, maintenance, or Alteration of the Authorized System, or a portion of the Authorized System.</p>

Owner	for the purposes of the Approval means the Corporation of the Town of Gananoque and includes its successors and assigns.
Source Protection Plan	means a drinking water source protection plan prepared under the CWA.
Storm Sewer	means Sewers that collect and transmit, but not exfiltrate or lose by design, Stormwater resulting from precipitation and snowmelt.
Stormwater	means rainwater runoff, water runoff from roofs, snowmelt, and surface runoff.
Stormwater Management Facility	means a Facility for the treatment, retention, infiltration, or control of Stormwater.

1. Introduction

The following 2025 Stormwater Management Annual Report is submitted in accordance with Section 5 of the Consolidated Linear Infrastructure Environmental Compliance Approval (CLI-ECA) 156-S701 for the Town of Gananoque Stormwater Management system. This Stormwater Annual Report covers the reporting period from January 1st, 2025 to December 31st, 2025.

2. System Description

The Municipal Stormwater Management (SWM) system serving the Town of Gananoque's drainage area, is a separate system for stormwater (i.e. designed not to convey sanitary sewage or combined sewage) within the St. Lawrence River and the Gananoque River in the Gananoque River Watershed. The Municipal SWM System consists of storm sewers, culverts, ditches, Stormwater Management Facilities and outlets.

The CLI-ECA covers the entire Municipal SWM System owned and operated by the Town of Gananoque. The CLI-ECA does not cover municipally or privately-owned sewage works on industrial or commercial land.

3. System Performance and Monitoring

The Town of Gananoque conducts a monitoring program designed to ensure adequate conditions of the Stormwater Management System.

3.1 Stormwater Collection System

The stormwater collection system has 29.15km of storm sewers, ditches and swales. The Gananoque Public Works Department cleans and inspects all catch basins and oil and grit separators twice per calendar year.

Table 1: Stormwater Collection System by Diameter

System Type	Pipe Diameter (mm)	Length (km)	System Totals (km)
Storm Sewers	Up to 250	1.44	-
Storm Sewers	> 250 - 500	15.08	-
Storm Sewers	> 500 - 1050	5.64	-
Storm Sewers	> 1050	0.38	-
Storm Sewers	Unknown Size	1.58	-
Total Storm Sewers	-	-	24.08
Ditches / Swales	NA	-	5.07
Total System Length (km)	-	-	29.15

3.2 Stormwater Management Facilities

The performance of the stormwater management facilities is provided through annual inspections to visually identify performance or major functional issues.

The Town of Gananoque also consists of two oil and grit separators. One oil and grit separator located on Nalon Road and the other at Maplecroft Court. The oil and grit separators are inspected and cleaned twice per calendar year. There were no issues reported during the 2025 oil and grit separator inspections.

Table 2: Summary of Stormwater Management Facilities

Facility Type	Basic Treatment for Suspended Solids	Normal Treatment for Suspended Solids	Enhanced Treatment for Suspended Solids	Other Treatment Level for Suspended Solids	Total Quality Control	Total Quantity Control	Total Number of Facilities
LID Facilities - Retention (infiltration, evapotranspiration, harvest)							
LID Facilities - Filtration							
Stormwater Management Ponds - Wet (includes wetlands, hybrids)		1					1
Stormwater Management Ponds - Dry							
Super Pipe / Storage Facility							
Filtration MTD - Filter Unit							
Sedimentation MTD - OGS		2					2
Pumping Stations							0
Other							1
Total Number of Facilities							4

3.3 Monitoring Data Summary

Not applicable at this time. Future system 'monitoring plan' to be developed and implemented in accordance with Ministry of the Environment, Conservation and Parks (MECP) guidelines and the CLI-ECA requirements.

4. Environmental Trends – Previous 5 Years

Not applicable at this time.

5. Maintenance on Major Structures

All works are subject to the annual operational budget approval by Council. A request for proposal was submitted in 2024 to develop a Stormwater Management Master Plan. The Town of Gananoque shall identify, upgrade, and improve its stormwater infrastructure as stormwater management has become a concern due to increasingly intense storms and community development.

5.1 Charles Street North Stormwater Infrastructure

In November 2025, stormwater infrastructure at Charles Street North and Garden Alley was investigated and rehabilitated to address a broken sewer that had caused a sinkhole and recurring surface flooding at a low point in the roadway. The work included a CCTV inspection and survey of the existing system, preparation of mapping and review of downstream sewer capacity. A strategy was made to restore proper drainage by repairing the damaged pipe to establish positive flow toward Garden Street and assessing the condition of the catch basins.

5.2 River Street Stormwater Pond

The River Street Stormwater Pond was inspected on June 23rd, 2025 as part of the municipality's ongoing stormwater management program. The inspection identified extensive vegetation growth within the pond, which limited visibility of the berm, pond conditions and flow paths. No evidence of spills or oil/grease contamination was observed at the time of inspection. Following the inspection, the trees and shrubs were removed and vegetation was trimmed back to restore visibility of the berm and improve the ability to monitor pond performance, condition and flow.

6. Spills and Abnormal Discharge Events

No spills or abnormal discharge events occurred during the reporting period.

7. Customer Complaints

The customer complaints summarized in this report reflect stormwater concerns received directly by the Roads Division and the Utilities Division staff during the reporting period. These complaints were addressed through site inspections and maintenance activities. Complaints received by other departments are not included in this summary.

Date	Customer Complaint	Resolution
November 17 th , 2025	A resident reported concerns regarding drainage at a catch basin located on Elmwood Drive, near the intersection of Elizabeth Drive and King Street East. The resident indicated that water was observed near the top of the grate. The Utilities Division attended the location and inspected the catch basin. At the time of inspection, the water level was observed to be several inches below the top of the grate and no immediate drainage issue was confirmed. The condition was documented for monitoring and a follow-up requested by the Roads Division.	Roads Division staff attended the site, opened the catch basin lid and hydro vacuumed the debris from the structure. The catch basin was confirmed to be clear and functioning as intended following the maintenance. The resident was advised not to place materials over the catch basin in the future to prevent obstruction. No further action was required.

8. Key Contacts

David Armstrong
Manager of Public Works
Phone: 613-382-2149 ext. 1615
Email: pwmanager@gananoque.ca

Brock Webb
Roads Superintendent
Phone: 613-382-2149 ext. 1611
Email: roadsuperintendent@gananoque.ca

Michelle Jones
Public Works Technical Assistant
Phone: 613-382-2149 ext. 1613
Email: pwinfo@gananoque.ca

Christine Brennan
Utilities Compliance Coordinator
Phone: 613-382-2149 ext. 1612
Email: utilitycompliance@gananoque.ca



Appendix A

FILE LOCATION: W:\GIS_Projects\Gananoque_GIS\27038_C rim SEWER.mxd



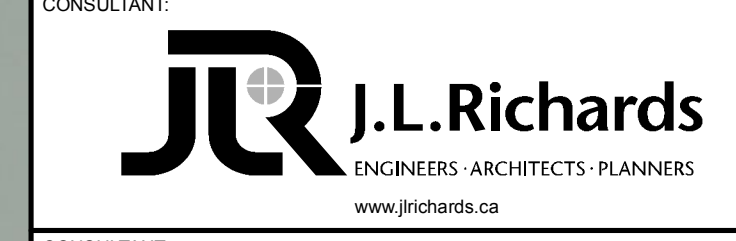
- Legend**
- 1981 Storm Maintenance Hole Spreadsheet ObjectID
 - Storm Maintenance Hole
 - × Inlet / Outlet
 - Catch basin
 - manhole
 - Storm Sewer
 - Year Installed
 - 2010
 - No Information
 - Bridge / Culvert
 - 375 Sewer Diameter (mm)
 - pvc Sewer Material

NO.	ISSUE / REVISION	DATE

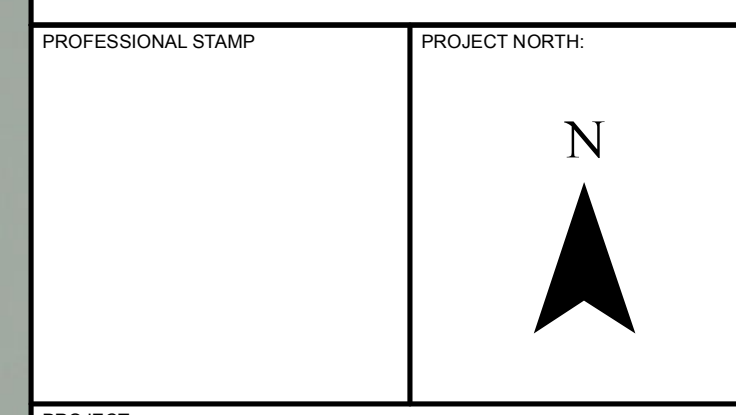
This drawing is copyright protected and may not be reproduced or used for purposes other than execution of the described work without the express written consent of J.L. Richards & Associates Limited.
 VERIFY SHEET SIZE AND SCALE'S BAR TO THE RIGHT IS 25mm IF THIS IS A FULL SIZE DRAWING.

SCALE: 1:3,000

0 25 50 100 150 200 Meters



CONSULTANT:
 PROFESSIONAL STAMP



PROJECT:
GIS ASSET INVENTORY
 GANANOQUE, ONTARIO

DRAWING:
STORM COLLECTION SYSTEM

DESIGN: KTK	DRAWING #
DRAWN: KTK	4
CHECKED: SS	
J.R.# 27838	

PLOT DATE: November 8, 2016 1:55:26 PM